

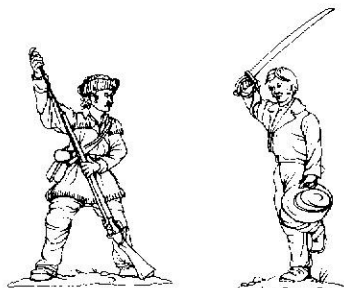
THE ALAMO and the TEXAN WAR OF INDEPENDENCE - 1835-36

Recreating the heroic days of the struggle for independence of the Texan settlers against the oppression of Mexican rule under the dogmatic & evil Santa Anna, this unique & beautifully sculptured range of figures cleverly brings to life the men who took part in one of the most famous and talked about landmarks in American history. The ALAMO'S commander, Colonel Travis is depicted, sword in hand, dashing towards the parapet. The indefatigable Davy Crockett desperately rams home his last shot while his faithful volunteers in their buckskins frantically give their last effort in a vain attempt to save the tiny Garrison from the onrush of the Mexicans!

Definitely a range of figures second to none and one to fire the imagination of any wargamer or diorama builder.

TEXANS

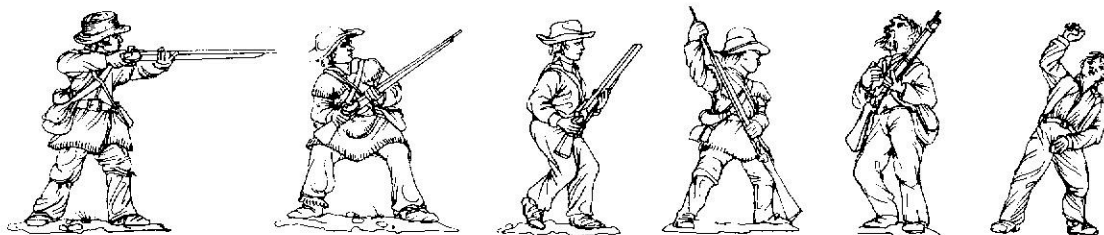
- TXO1 Col. Davy Crockett - ramming home shot
TXO2 Lt. Col. William B. Travis - running brandishing sword



TXO1

TXO2

- TX1 Texian volunteer - in buckskins, standing firing Kentucky rifle
TX2 Texian - buckskins - defending
TX3 Texian - shirtsleeves - advancing with shotgun
TX4 Volunteer standing loading Kentucky rifle - buckskins
TX5 Falling dead
TX6 Lying dead



TX1

TX2

TX3

TX4

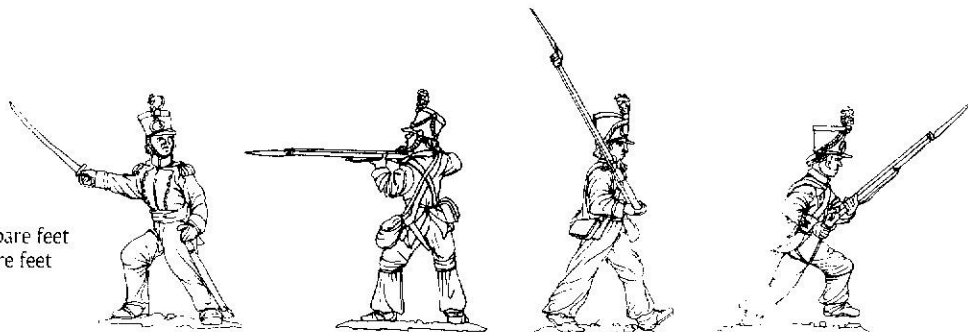
TX5

TX6

MEXICAN INFANTRY

- MXO1 Officer advancing with sword

- MX1 Infantryman standing firing
MX2 Marching with shouldered musket
MX3 Charging with fixed bayonet
MX4 Running (in sandals) with fixed bayonet
MX5 Standing loading musket - scruffy trousers and bare feet
MX6 Kneeling firing musket - scruffy trousers and bare feet
MX7 Falling dead
MX8 Lying dead

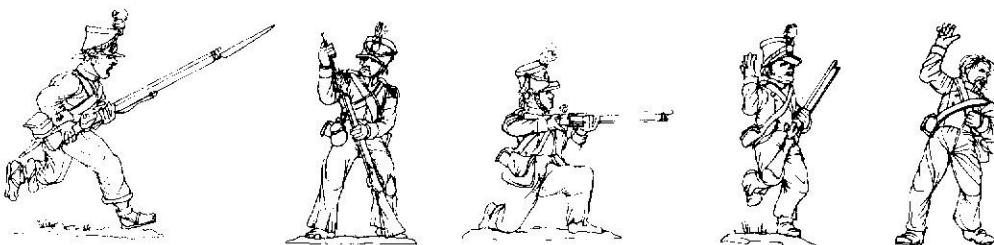


MXO1

MX1

MX2

MX3



MX4

MX5

MX6

MX7

MX8



All figures except TXO1 & 2 have a selection of head variants. Please do not order specific variants.

All these figures can, of course be used for the whole of the war of Texan independence including the subsequent battle of San Jacinto etc. also the texans can be used along with our WESTERN GUNFIGHTERS and certain gunfighters, namely the ones with shotgun (WG2 & WG5) may be used with the ALAMO range. By the same token a certain overlap into the AMERICAN CIVIL WAR range is feasible as some units in the war still wore buckskins and used the Kentucky long rifle. Some of the A.C.W. figures (in hats) may also be used as ALAMO defenders.